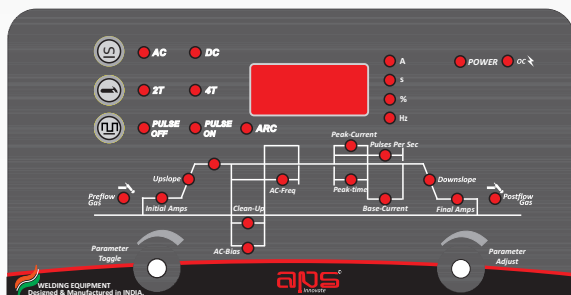


## AC/DC PULSE TIG



## STORM



- IGBT high frequency soft switches, high efficiency and reliability.
- Welding parameters can be set **accurately**.
- **AC square wave** for welding stainless steel, alloy steel, carbon steel, copper and other non-ferrous metals.
- Multifunction : **MMA, DC TIG, AC TIG, DC Pulse TIG and AC Pulse Welding**.
- Easy arc starting, stable welding current and excellent square wave.
- **Fast response, little splashing and excellent** welding appearance.
- **Stable low current** welding with minimum current up to 5A.
- Insulation of main transformer : **Class H**.
- Insulation of output reactor : **Class B**.
- **OCV** is 75Volts for better arc restriking.

## DigiCon

DIGITAL CONTROL

### AC/DC TIG Features

- Pulse Frequency - 0.2 - 20 Hz
- AC Frequency - 20 - 200 Hz
- Pre Flow - 0.1 - 15 sec
- Post Flow - 0.1 - 15 sec
- Cleaning Ratio - -40% ~ +40%



Technical Specifications	Storm 315
Input Supply Voltage	330VAC - 500VAC 3Ph, 50Hz - 60Hz
Max Installed Power	12.72 KVA / 16.19 HP
Current Range (Amps)	20A - 315A
Current @ 60% Duty	315A
Current @ 100% Duty	244A
Dimensions ( W x L x H )	340 X 650 X 590
Weight (Kg)	47.5

### Accessories

#### Tig Torch



#### Argon Regulator



#### Ground Clamp



#### Flow Meter



### Add - On

#### Water Circulating Unit



All pictures shown are for illustrative purposes only.

All specifications in this document are for informational purposes only and are subject to change without prior notice.

# ADVANCED POWER SOURCES<sup>®</sup> LIMITED

WELDING - CUTTING - GOUGING - AUTOMATION - ACCESSORIES

#### Registered Office:

No. 306, Sagar Industrial Estate, Near Toll Naka, Dahisar(E),  
Mumbai, Maharashtra - 400 068. INDIA. Ph: 022-28967134  
CIN: U74990MH2009PLC195896

#### Manufacturing Facility:

Survey no. 172/1, Paikee 2, Old GIDC, Gundlav, Valsad,  
Gujarat - 396035 .INDIA. Ph: 02632-236799/98

email: [info@apsl.in](mailto:info@apsl.in)

[www.apsl.in](http://www.apsl.in)