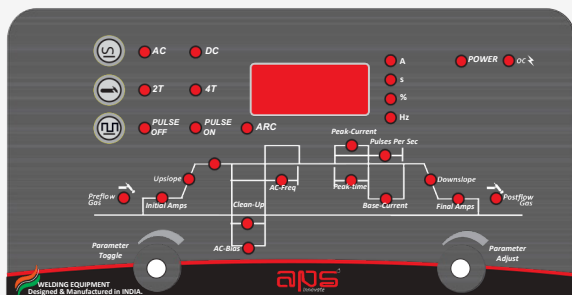


## AC/DC PULSE TIG



## STORM



- § IGBT high frequency soft switches, high efficiency and reliability.
- § Welding parameters can be **set accurately**.
- § **AC square wave** for welding stainless steel, alloy steel, carbon steel, copper and other non-ferrous metals.
- § Multifunction : **MMA, DC TIG, AC TIG, DC Pulse TIG and AC Pulse** Welding.
- § Easy arc starting, stable welding current and excellent square wave.
- § **Fast response, little splashing** and **excellent** welding appearance.
- § **Stable low current** welding with minimum current up to 5A.
- § Insulation of main transformer : **Class H**.
- § Insulation of output reactor : **Class B**.
- § **OCV** is 75Volts for better arc restriking.

### DigiCon DIGITAL CONTROL

#### AC/DC TIG Features

- § Pulse Frequency - 0.2 - 20 Hz
- § AC Frequency - up to 100 Hz
- § Pre Flow - 0.1 - 15 sec
- § Post Flow - 0.1 - 15 sec
- § Cleaning Ratio - -40% ~ +40%



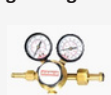
Technical Specifications	Storm 500
Input Supply Voltage	330VAC - 500VAC 3Ph, 50Hz - 60Hz
Max Installed Power	24.77 KVA / 31.55 HP
Current Range (Amps)	20A - 500A
Current @ 60% Duty	500A
Current @ 100% Duty	387A
Dimensions ( W x L x H)	380 X 777 X 839
Weight (Kg)	47.5

#### Accessories

##### Tig Torch



##### Argon Regulator



##### Ground Clamp



##### Flow Meter



All pictures shown are for illustrative purposes only.

All specifications in this document are for informational purposes only and are subject to change without prior notice.

#### Add - On

##### Water Circulating Unit



## ADVANCED POWER SOURCES<sup>®</sup> LIMITED

WELDING - CUTTING - GOUGING - AUTOMATION - ACCESSORIES

#### Registered Office:

No. 306, Sagar Industrial Estate, Near Toll Naka, Dahisar(E),  
Mumbai, Maharashtra - 400 068. INDIA. Ph: 022-28967134  
CIN: U74990MH2009PLC195896

#### Manufacturing Facility:

Survey no. 172/1, Paikee 2, Old GIDC, Gundlav, Valsad,  
Gujarat - 396035 .INDIA. Ph: 02632-236799/98

email: [info@apsl.in](mailto:info@apsl.in)

[www.apsl.in](http://www.apsl.in)